



A division of CIRCOR International, Inc.

Application Guide

SPENCE ENGINEERING COMPANY, INC. 150 COLDENHAM ROAD, WALDEN, NY 12586-2035

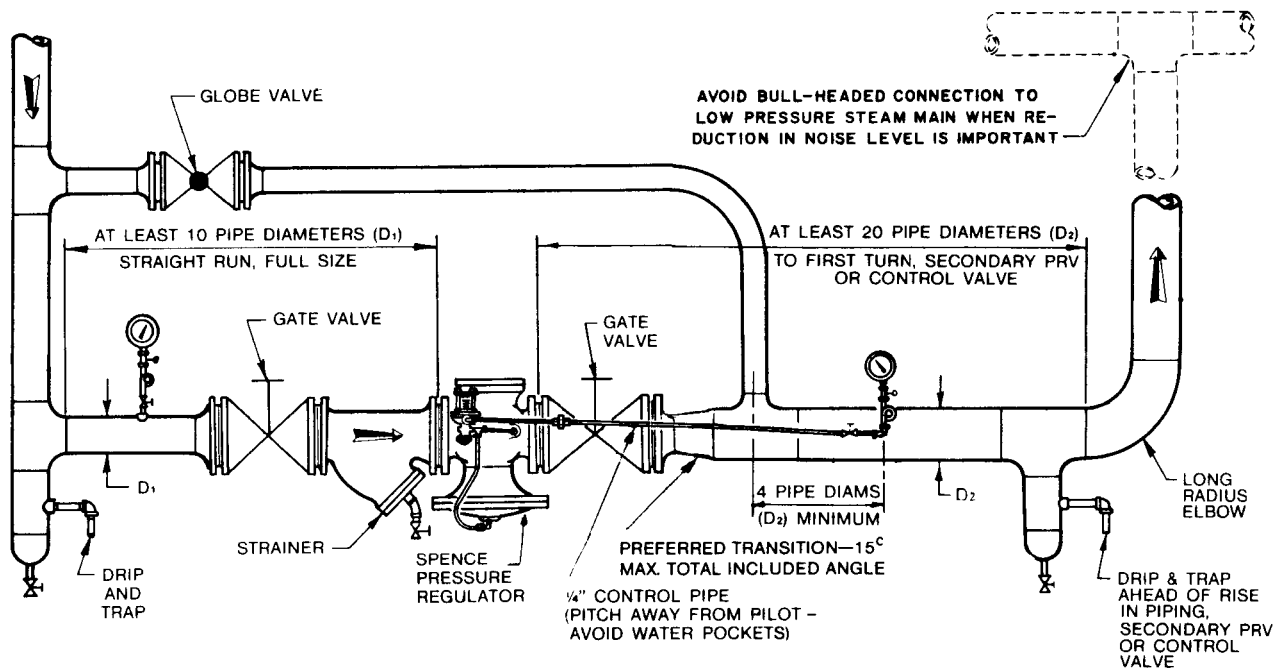
TYPE ED SINGLE STAGE PRESSURE REDUCING VALVE

APPLICATION:

To reduce a steady or varying Inlet pressure to a constant adjustable delivery pressure.

OPERATION:

Valve is operated by incoming pressure. As delivery pressure nears spring setting on pilot, valve starts to modulate and maintain set pressure.



RECOMMENDED INSTALLATION OF REGULATOR WITH STRAINER

ADVANTAGES:

- Accurate, sensitive control.
- Packless construction.
- High capacity.
- Inexpensive.