



A division of CIRCOR International, Inc.

Application Guide

SPENCE ENGINEERING COMPANY, INC. 150 COLDENHAM ROAD, WALDEN, NY 12586-2035

ED5 FOR
DEAERATOR

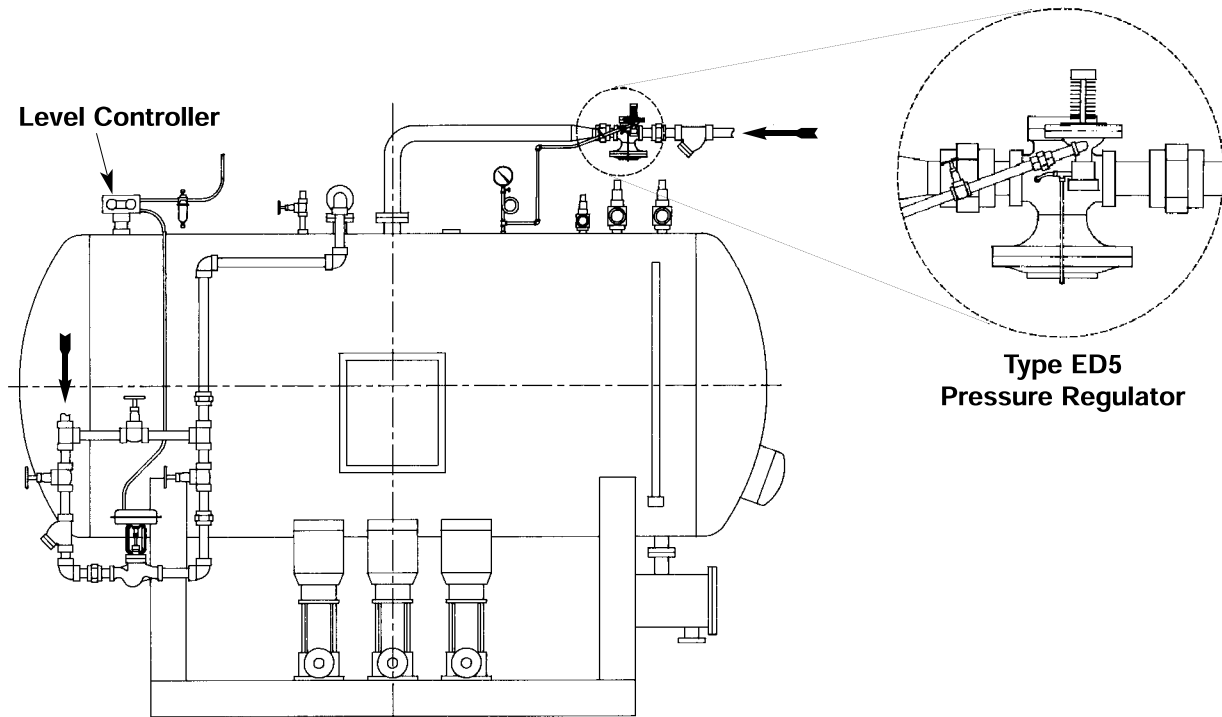
TYPE ED5 PRESSURE REGULATOR for ACCURATE CONTROL of a DEAERATOR

APPLICATION:

To enhance the deaeration of boiler feedwater by accurately controlling the steam pressure and temperature in a deaerator.

OPERATION:

The Type ED5 Pressure Regulator is connected to the Deaerator as shown, *with the Type D5 Pilot's Sensing Line connected to the Deaerator*. Operation is identical to the Type ED except delivery pressure is sensed in the Deaerator, not the steam piping. The larger, more sensitive diaphragm of the Type D5 Pilot (1 to 25 psig delivery pressure) has twice the accuracy ($\pm 1/2$ psig) of the Type D Pilot (± 1 psig). With the Type D5 Pilot typically set at 5 psig, temperature variation inside the Deaerator is held to $\pm 1^\circ\text{F}$.



APPLICATION GUIDE
PRESS. REDUCING-STM/GAS

ADVANTAGES:

- Self-contained, packless regulator
- Increased accuracy for better deaeration
- Type E2 substituted if initial steam pressure is between 9 and 15 psig

This document was created with Win2PDF available at <http://www.win2pdf.com>.
The unregistered version of Win2PDF is for evaluation or non-commercial use only.
This page will not be added after purchasing Win2PDF.