



A division of CIRCOR International, Inc.

Application Guide

SPENCE ENGINEERING COMPANY, INC. 150 GOLDENHAM ROAD, WALDEN, NY 12586-2035

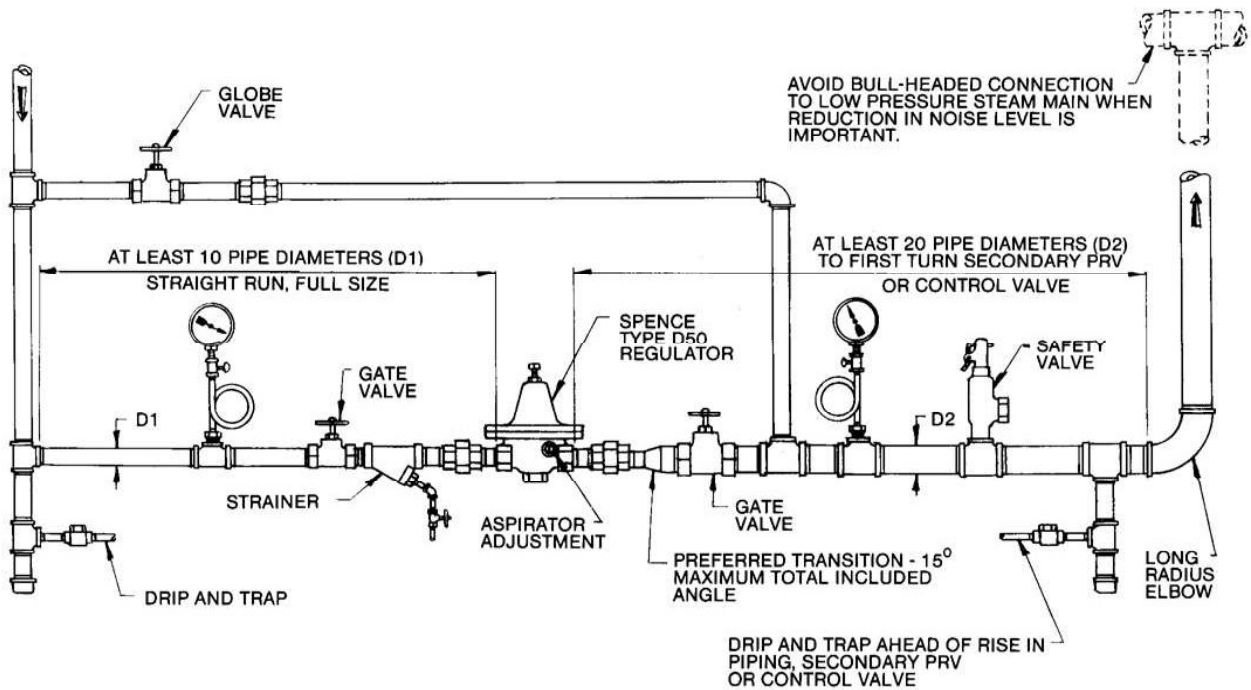
TYPE D50 DIRECT OPERATED PRESSURE REDUCING VALVE

APPLICATION:

To reduce a steady or varying inlet pressure to a constant adjustable delivery pressure. Ideal for small flows such as unit heaters and sterilizers.

OPERATION:

Valve is operated by incoming pressure. As delivery pressure nears spring setting on pilot, valve starts to modulate and maintain set pressure.



ADVANTAGES:

- Accurate control.
- Available in Cast Iron, Bronze and Stainless Steel.
- Aspirator adjustment for greater sensitivity.

This document was created with Win2PDF available at <http://www.win2pdf.com>.
The unregistered version of Win2PDF is for evaluation or non-commercial use only.
This page will not be added after purchasing Win2PDF.