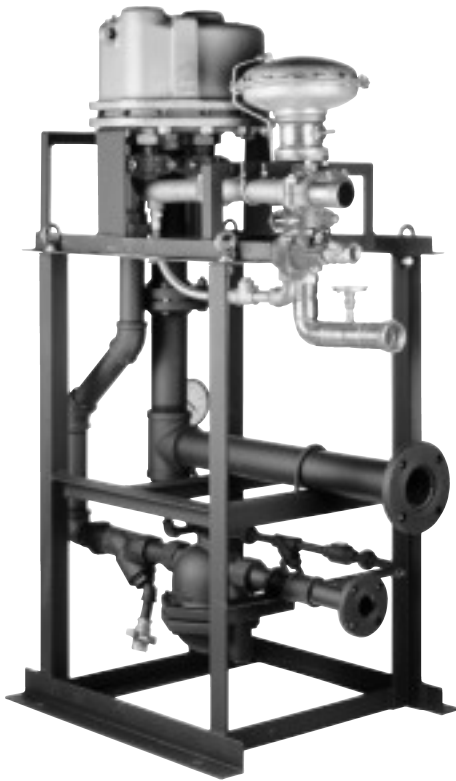


# CONSTANTEMP SKID MOUNTED HEATER



E-600L SKIDDED STEAM WATER HEATING SYSTEM

## APPLICATION DATA

---

- See individual heaters

## RATINGS

---

See individual heaters

SIZING INFORMATION  
SEE INDIVIDUAL HEATERS

## FEATURES

---

- Save Time
- Save Manpower
- Feed-forward control
- Economical
- Completely assembled
- Only 4 connections required
  - Steam
  - Cold water
  - Hot water
  - Condensate
- 100% Leslie components
- 100% Leslie assembly
- 100% pressure tested

## OPTIONS

---

- Recirculation Package
- Recirculation Pump
- Steam Reducing Valve
- Pressure Assisted Condensate Pump
- Pressure Gradient Monitor

# CONSTANTEMP SKID MOUNTED HEATER

## SPECIFICATIONS

Constantemp heater to be mounted on a skid with all traps, strainers, pressure and temperatures gauges all fully assembled and piped. Complete package to be pressure tested for leaks.

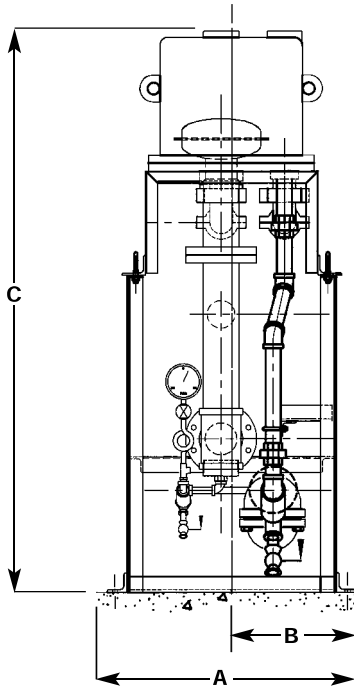
Unit to be assembled so that is sufficient room between heat exchanger and traps for proper operation.

Customer shall only need to hook up steam, cold water in, hot water out and condensate.

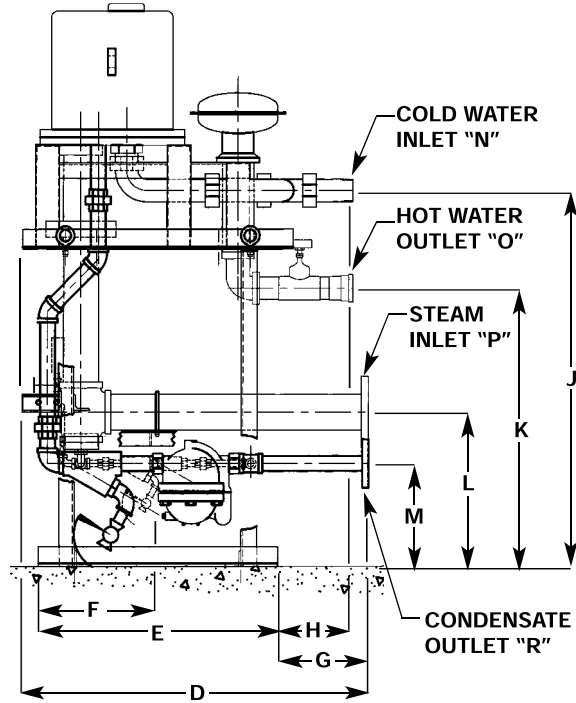
## MATERIALS OF CONSTRUCTION

Heater: .....See Individual Heater

Skid: .....2½ x 2½ x ¼ Angle Iron



FRONT ELEVATION



END ELEVATION

### DIMENSIONS inches (mm)

Model	A	B	C	D	E	F	G	H	J	K	L	M		
E1500L/E300L	28¼ (718)	14⅞ (359)	55½ (1410)	37½ (953)	30½ (775)	15¼ (387)	6⅞ (162)	4¼ (108)	45 <sup>15</sup> / <sub>16</sub> (1167)	34⅞ (879)	22½ (572)	12 (305)	22.5 (559)	12 (305)
E4500L/E600L	28¼ (718)	14⅞ (359)	58¼ (1480)	39⅞ (1006)	30½ (775)	15¼ (387)	8½ (216)	4⅞ (111)	46⅞ (1188)	35¼ (895)	22¼ (565)	13¼ (349)	22¼ (565)	13¼ (349)
E7500L/E900L	28¼ (718)	14⅞ (359)	68¼ (1734)	42⅞ (1083)	30½ (775)	15¼ (387)	11½ (292)	4¼ (121)	47⅞ (1210)	35¼ (895)	19 (483)	11 (279)	19 (483)	11 (279)
E10500L/E1200L	31½ (800)	15¼ (387)	68¼ (1734)	44 (1118)	30½ (775)	15¼ (387)	11½ (292)	9½ (241)	47⅞ (1210)	35¼ (895)	19 (483)	11 (279)	19 (483)	11 (279)

End Connection	E1500L/300L	E4500L/600L	E7500L/900L	E1050L/1200L
"N" Cold Water Inlet	1½ MNPT	2 MNPT	2½ MNPT	2½ MNPT
"O" Hot Water Outlet	2 FNPT	2 FNPT	2½ FNPT	2½ FNPT
"P" Steam Inlet	3 150# Fig. RF	3 150# Fig. RF	4 150# Fig. RF	4 150# Fig. RF
"R" Condensate Outlet	1 150# Fig. RF	1½ 150# Fig. RF	1½ 150# Fig. RF	1½ 150# Fig. RF

Dimensions are approximate and may vary slightly then shown. All dimensions are in inches. Standard tolerance for location of all pipe connections and envelope dimensions is plus or minus 1/2".

This document was created with Win2PDF available at <http://www.win2pdf.com>.  
The unregistered version of Win2PDF is for evaluation or non-commercial use only.  
This page will not be added after purchasing Win2PDF.