

LES PACKAGED WATER HEATER



FEATURES

- Compact size
- Flows to 330 GPM
- Steam or HTHW as heating source
- SS tank
- $\pm 5^{\circ}\text{F}$ accuracy
- Industrial quality steam control valve
- Coil can be removed without disturbing heater

OPTIONS

- Double wall coils
- Vacuum breaker
- 235 MAWP pressure rating

APPLICATION DATA

- Hospital patient and domestic hot water
- Industrial shower rooms
- Building heat
- University dormitories

RATINGS

Shell: 150 psi

Tubes: 150 psi

SIZING INFORMATION
SEE PAGE 34

LES PACKAGED WATER HEATER

SPECIFICATIONS

For specifying a LES Series Steam-Fired Water Heater, select the model(s) from the charts provided and use the specifications covered below. Contact you local Leslie representative or consult the factory.

Heater shall be Leslie Series "LES" factory assembled and packaged, rated to heat specified GPM of water from ____ to ____°F, temperature rise and control the outlet within $\pm 5^{\circ}\text{F}$ of the selected temperature when supplied with ____ psig saturated steam before the control valve. The packaged water heater shall be constructed with a 316L Stainless Steel tank, with Stainless Steel threaded openings, copper coil, 1/2" tubes, copper lined tube sheet and fabricated steel steam chamber.

Heater shall be mounted on a steel support skid and shall have lifting lugs. Heater shall be foam insulated and protected by an enameled metal jacket, 20 gauge minimum thickness. Heater shall be factory assembled and piped including:

Steam Units - Incoming steam strainer, pneumatic control valve, main and auxiliary float and thermostatic steam traps.

Coil shall be baffled and shall have an integral bronze valve circulator with shut off valves to circulate the water across the coil.

Heater shall be furnished with A.S.M.E. pressure-temperature relief valve of sufficient size to relieve total BTU input of the coil, water thermometer, water pressure gauge and steam pressure gauge.

For Vertical - Heater shall be Leslie Controls, Inc. Model V ____ LES ____

For Horizontal - Heater shall be Leslie Controls, Inc. Model H ____ LES ____

MATERIALS OF CONSTRUCTION

Coil: StandardCopper
OptionalCupro-nickel, Stainless Steel
Shell:316 L SS
Piping:.....Copper
Circulating Pump:Bronze

BASIC LES PACKAGE COMPONENTS:

Compact size
A.S.M.E. Code constructed National Board registered storage tank
Pressure Rating 150 psig (10 bar)
316-L Stainless steel tanks
316-L Stainless steel threaded connections
2" (5 cm) Foam insulation
20 Gauge steel jacket with hammertone enamel paint
Structural steel base
A.S.M.E. relief valve-pressure and temperature
Digital thermometer
Water pressure gauge
Drain Valve
Copper U-Bend heating coil, rolled into copper lined tube sheet
Integral bronze circulator
High temperature cutoff
Double safety solenoid system

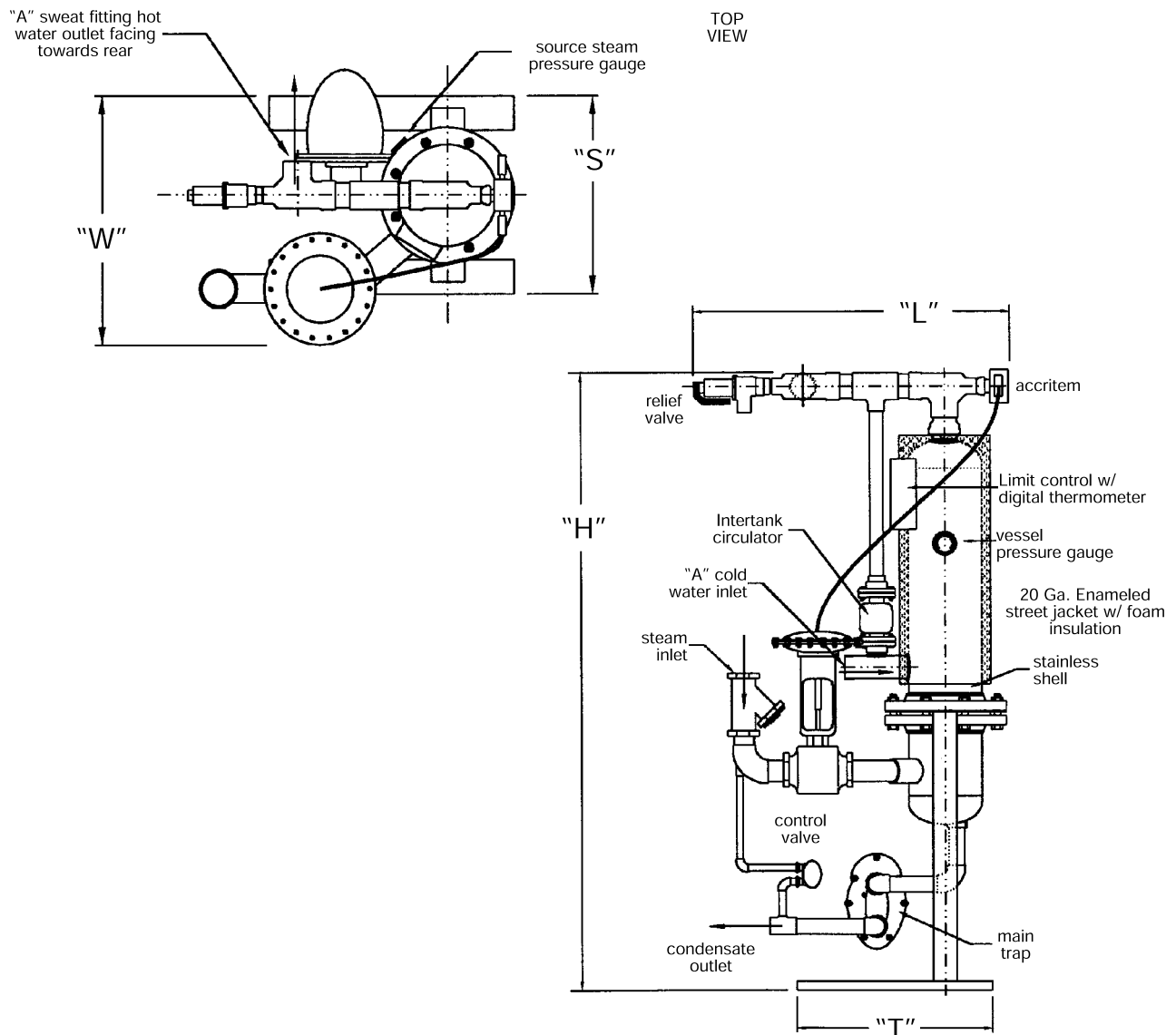
STANDARD STEAM PACKAGE COMPONENTS:

Steam temperature control valve
Steam traps-main inlet and auxiliary
Steam stainer, inlet
Steam pressure gauge

STANDARD BOILER WATER/HIGH TEMPERATURE HOT WATER PACKAGE COMPONENTS:

Boiler water control valve (Two way or three way)
Boiler water temperature gauge
High temperature hot water units with 90:10 CuNi tubing.
400 psi (27 bar) maximum pressure

LES PACKAGED WATER HEATER DIMENSIONS - VERTICAL



VERTICAL CONFIGURATION DIMENSIONS inches (mm)

Model #	H	L	W	S	T	A
V6LES624	62 (1575)	20 (508)	24 (610)	18 $\frac{3}{4}$ (476)	24 (610)	2 (51)
V8LES820	74 (1880)	24 (610)	25 (635)	21 $\frac{1}{4}$ (540)	30 (762)	2 $\frac{1}{2}$ (64)
V8LES830	74 (1880)	24 (610)	25 (635)	21 $\frac{1}{4}$ (540)	30 (762)	2 $\frac{1}{2}$ (64)
V10LES1030	74 (1880)	28 (711)	29 (737)	23 $\frac{3}{4}$ (603)	32 (813)	2 $\frac{1}{2}$ (64)
V10LES1036	86 (2184)	30 (762)	29 (737)	23 $\frac{3}{4}$ (603)	32 (813)	3 (76)
V12LES1236	86 (2184)	32 (813)	32 (813)	26 $\frac{3}{4}$ (679)	34 (864)	3 (76)
V12LES1242	100 (2540)	34 (864)	32 (813)	26 $\frac{3}{4}$ (679)	34 (864)	3 (76)
V14LES1442	100 (2540)	34 (864)	34 (864)	28 $\frac{3}{4}$ (730)	36 (914)	4 - 150# flange (102)

This document was created with Win2PDF available at <http://www.win2pdf.com>.
The unregistered version of Win2PDF is for evaluation or non-commercial use only.
This page will not be added after purchasing Win2PDF.